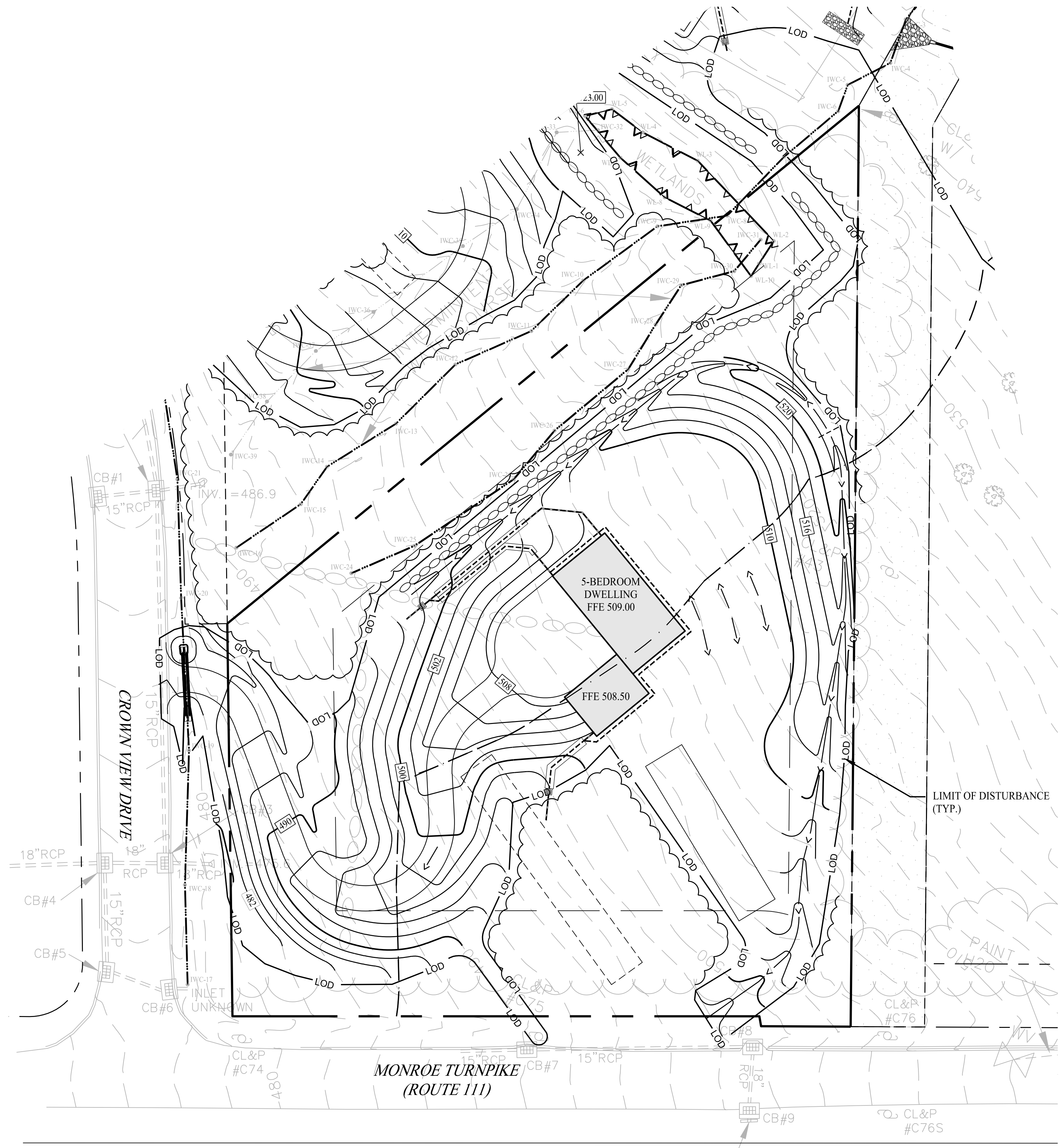




GENERAL NOTES

1. THIS PLAN WITH AND ASSOCIATED IWWC APPLICATION, APPLICATION NUMBER 1 12-09, WAS REVIEWED AND APPROVED BY THE TOWN OF MONROE INLAND WETLANDS AND WATERCOURSE COMMISSION ON DECEMBER 5, 2012.
2. EXISTING SITE CONDITION INFORMATION TAKEN FROM A MAP ENTITLED "ALTA/ACSM LAND TITLE SURVEY, SHOWING PROPOSED 'FIRST CUT', PREPARED FOR STONE CASTLE INVESTMENTS, LLC, CROWN VIEW DRIVE & MONROE TURNPIKE (ROUTE 111), MONROE, CONNECTICUT," DATED MARCH 7, 2013, SCALE = 1"=100', BY BERKSHIRE ENGINEERING & SURVEYING, LLC.



Rev. #:	Date	Description



SOLLI ENGINEERING
 501 Main Street, Monroe, CT 06468 T: (203) 880-5455 F: (203) 880-9695
 331 Newbury Street, Boston, MA 02115 T: (617) 203-3140 F: (203) 880-9695

Drawn By:	CJP	Kevin Solli, P.E. CT 25759
Checked By:	MSL	
Approved By:	KMS	
Project #:	21102201	
Plan Date:	03/09/21	
Scale:	1" = 30'	

Project:
PROPOSED RESIDENCE
 8 CROWN VIEW DRIVE
 MONROE, CONNECTICUT

Sheet Title: ALTERNATIVE SITE PLAN (PREVIOUSLY APPROVED)	Sheet #: ALT-1
---	--------------------------